

Making it LUX

Steph and Angus Warner
have transformed a dated
bedroom and bathroom into
a cocooning retreat

Words: **Amelia Thorpe** Photography: **John McIntosh**



The gleaming Boat **bath**, from Pier 1 Bathrooms, is the focal point of the new design and Steph's favourite retreat at the end of a busy day.

The FACTS

Who Steph and Angus Warner with their daughters Ivy, six, and Clementine, four
What Main bedroom and ensuite refurbishment
Where East Sussex
Cost £15,000
Time Five months



The door closest to the bay window leads to the walk-in wardrobe, while a new door has been created, left, to the new ensuite.

There's been a lot going on in the lives of Steph and Angus Warner over the last few years. Psychologist Steph and Angus, who works in the energy industry managing power plants, decided to set up their own business in Brighton – Pier 1 Bathrooms – at the same time as parenting their two young daughters, Ivy, now six, and Clementine, four, and moving house.

“We wanted to put down roots in the area by establishing and growing a local business,” explains Steph. “We were inspired by Angus’ brother, who runs a bathroom company in London.” And, as they were founding Pier 1 Bathrooms, the couple were also embarking on a plan to find a more spacious home. “We were living in a fifth-floor flat without a lift, which wasn’t ideal with two small children,” admits Steph. Eventually, they were able to buy a post-war mock-Tudor four-bedroom house with large garden, close to a park, located a few miles from their former flat. “It’s a family-friendly home, but it was in a very dated condition,” she continues.

In particular, the main bedroom was filled with fitted furniture and the ensuite was in need of some love and attention. Steph and Angus quickly set about stripping the room of its jam-packed arrangement of fitted cupboards, instantly creating a roomier feel. Then they turned to Pier 1’s showroom manager and designer, Rosie Proto, for help with designing the project. “Rosie has been with us since we opened the doors of the business and really understands design,” explains Steph. “We knew she would be able to help us transform our ideas into reality.”

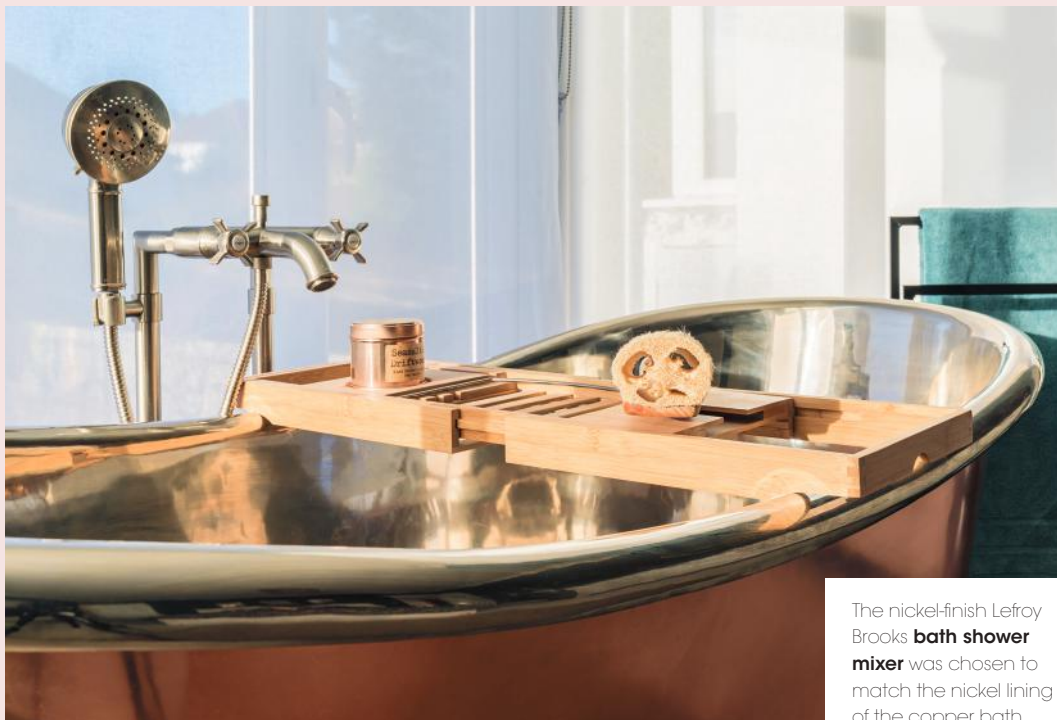
After admiring a copper bath in their showroom, Steph had set her heart on one for their bedroom. “I felt the bay window was the perfect spot and that it would add a real sense of luxury and indulgence,” she says. Rosie suggested mounting the tub on a plinth to accentuate its statement role in the room – and also disguise the new pipework needed to plumb the bath into this position. The gleaming tub is teamed with a nickel-finish bath shower mixer to match the nickel lining of the bath.

With the bath in position, Steph admits to painting the bedroom walls several times, moving from pink to blue before finally settling on the deep, rich grey, which has a dark depth and works well with the polished copper of the bath. Simple roller blinds provide privacy and can be adjusted according to the time of day. “Sometimes I like to lie in the bath and look up at the tall trees in the garden – it’s very peaceful,” she adds.

Turning their attention to the ensuite, the couple decided to split the space in half, making the end closest to the bay window into a walk-in wardrobe. “We didn’t want to crowd the bedroom with a big wardrobe, nor did we need a bath in the ensuite any longer, so it made sense to rethink the space,” explains Steph. The new walk-in cupboard means clothes, shoes and bags can be stored out of sight, keeping the sleeping space calm and free of clutter.

Steph and Angus wanted to include a shower, WC and basin in the newly compact ensuite, measuring about 2.1 x 1.6m, and Rosie’s task was to create a layout that didn’t feel too cramped, while adding colour and texture. Her solution was to position a contemporary wall mirror opposite the entrance door, reflecting light and boosting the sense of space, above a stylish concrete wall-hung basin. Its shallow depth left enough room to walk through the ensuite and includes a good size shower and a wall hung WC tucked into the corner. “Rosie did such an amazing job in creating a sense of flow around the room – nothing feels awkward or poky,” says Steph.

Painting the ensuite walls in a dusty shade of pink added instant warmth to the space, while fluted wall panelling introduces texture and depth to the scheme. Supplied as easy to install and lightweight panels, they arrive primed and ready to be painted, and have been finished in the same colour as the walls. Marble penny mosaic floor tiles add texture and a sense of luxury, while simple metro porcelain wall tiles mimic the look of handmade Moroccan Zellige and a touch of perfectly imperfect softness. >



The nickel-finish Lefroy Brooks **bath shower mixer** was chosen to match the nickel lining of the copper bath.

SOURCEBOOK

Bath and bath shower mixer

Pier 1 Bathrooms
pier1bathrooms.com

Floor tiles Boyden Tiles
boydentiles.co.uk

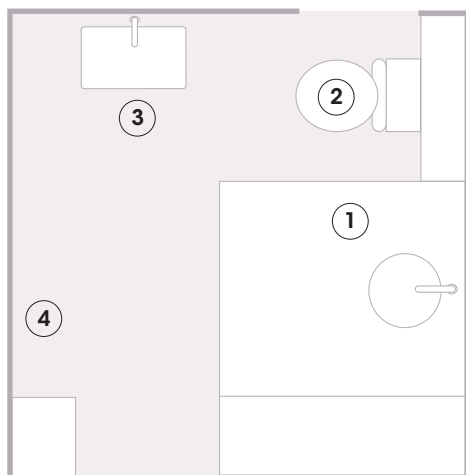
Ensuite basin, shower fittings, enclosure, shower tray, wall mirror, WC, flush plate, towel radiator, tiles

Pier 1 Bathrooms, as before.

Wall lights Spark & Bell
sparkandbell.com

Wall panelling The Library Ladder Company
lcompany.co.uk

For full stockists, see page 128. Search for more suppliers at thesethreerooms.com/directory



The PLANS

A new wall has been built to split the previous ensuite into two, creating a useful walk-in wardrobe, accessed from the bedroom.

1 Walk-in shower Built against the wall, its entry point sits close to the new entrance doorway.

2 WC Hung onto a frame, the cistern is concealed in a half-height built-out section of wall.

3 Basin The shallow design helps to provide a clear walkway around the room.

4 Towel radiator The sloping ceiling creates a niche, perfect for housing this feature.



Fluted **wall panelling**, from The Library Ladder Company, **painted** in Farrow & Ball's distinctive Setting Plaster.



above The half-height wall conceals the frame for the wall-hung WC, from Pier 1 Bathrooms. It also allows for a shower niche, backed in antiqued mirror, with discreet LED strip lighting.



right The smooth concrete of the Kast Flar Mini wall-mounted concrete basin adds texture to the space.



SHOP THE LOOK

- 1 Atrio three-hole basin mixer, £612, Grohe. grohe.com
- 2 Fairmont Carrara marble hexagon mosaic tiles, £20.10 per 30 x 30cm sheet, Porcelain Superstore. porcelainsuperstore.co.uk
- 3 Copper & White bath, £3160, Indigenus. indigenus.co.uk
- 4 Peony emulsion, £41.95 for 2.5 litres, Victory Colours. victorycolours.co.uk
- 5 Loving Grey emulsion, £21 for 1 litre, Yes Colours. yescolours.com **KBB**